



GSG | BERLIN






FLOOR PLANS

ZOSSENER STRASSE 55-58



FRAMEZ

GROUND FLOOR

	Dining area café	355.11 sqm
	Commercial/office	375.14 sqm
	Commercial/office	309.80 sqm
	Commercial/office	191.71 sqm
	Space	125.89 sqm
<hr/>		
	Total	1,357.65 sqm



1ST FLOOR

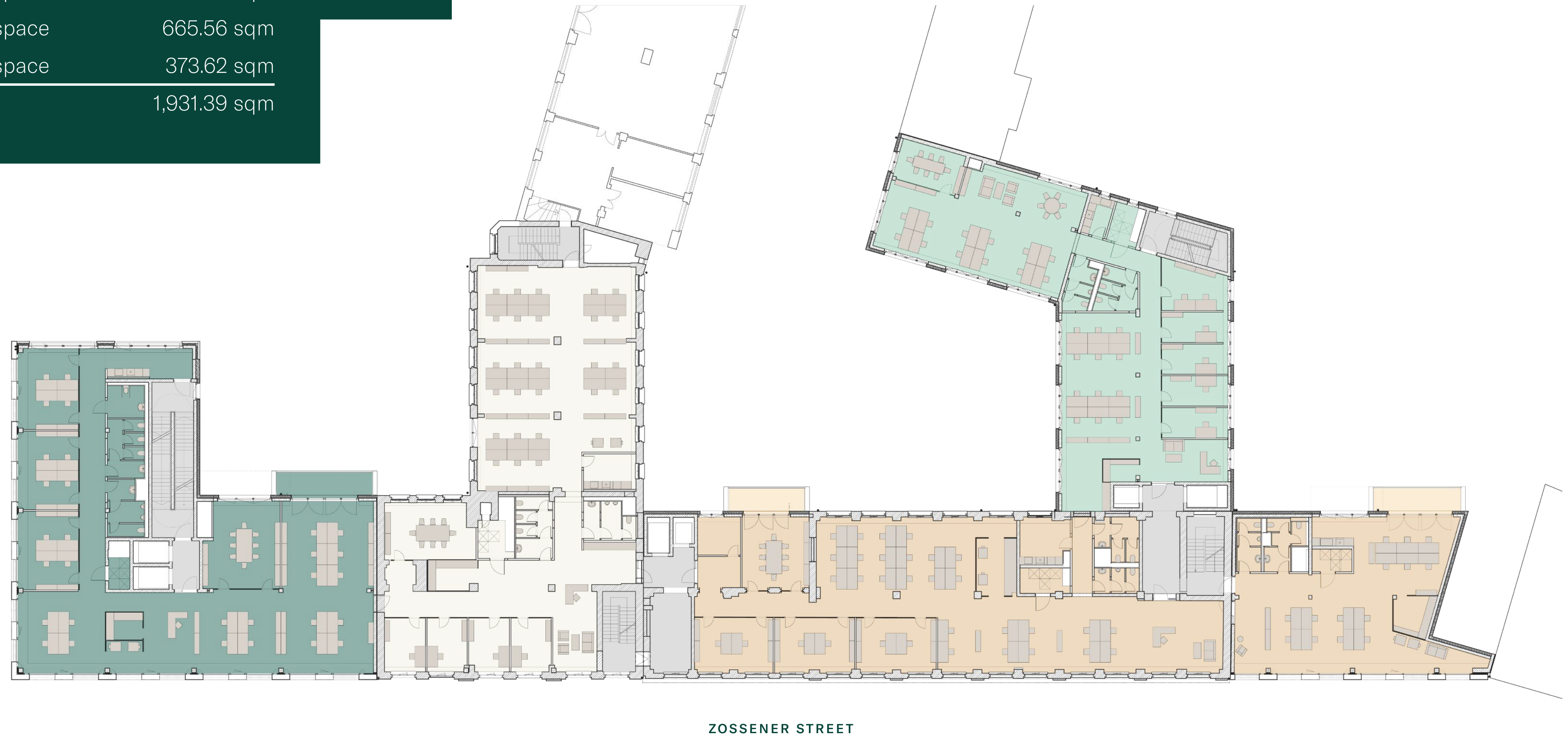
Office space	428.73 sqm
Office space	410.34 sqm
Office space	636.12 sqm
Office space	372.39 sqm
Total	1,847.58 sqm



ZOSSENER STREET

2ND FLOOR

Office space	445.7 sqm
Office space	446.51 sqm
Office space	665.56 sqm
Office space	373.62 sqm
Total	1,931.39 sqm



3RD FLOOR

Office space	449.72 sqm
Office space	449.97 sqm
Office space	657.37 sqm
Office space	375.24 sqm
Total	1,932.30 sqm



ZOSSENER STREET

4TH FLOOR

Office space	459.33 sqm
Office space	457.43 sqm
Office space	689.04 sqm
Office space	355.22 sqm
<hr/> Total	<hr/> 1,961.02 sqm

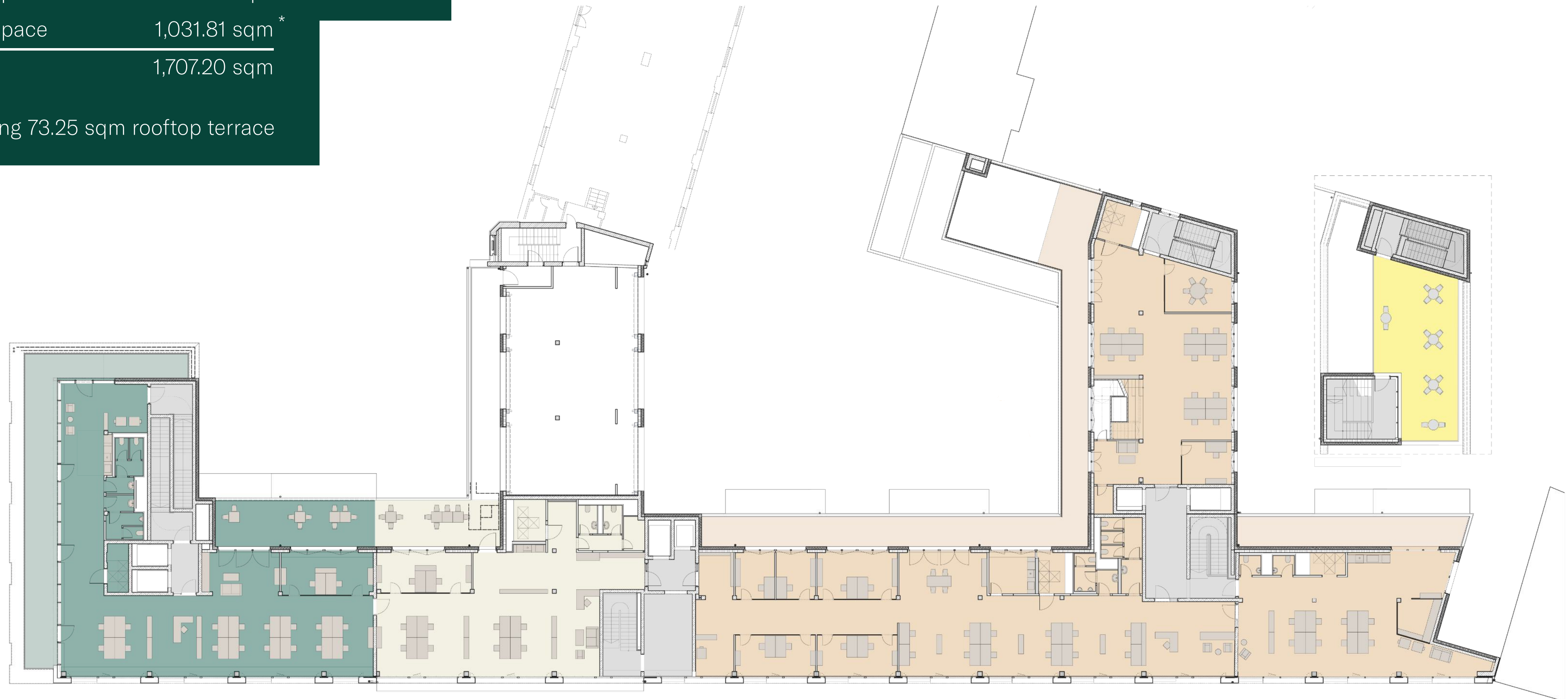


ZOSSENER STREET

5TH + 6TH FLOOR

Office space	434.77 sqm
Office space	240.62 sqm
Office space	1,031.81 sqm *
<hr/> Total	<hr/> 1,707.20 sqm

■ *including 73.25 sqm rooftop terrace



ZOSSENER STREET

CONTACT

GSG | BERLIN

GSG Berlin GmbH
Geneststraße 5, 10829 Berlin
www.gsg.de

Michaela Schnabel

Team Lead Leasing

Phone: +49 30 39093043

Email: Michaela.Schnabel@gsg.de

